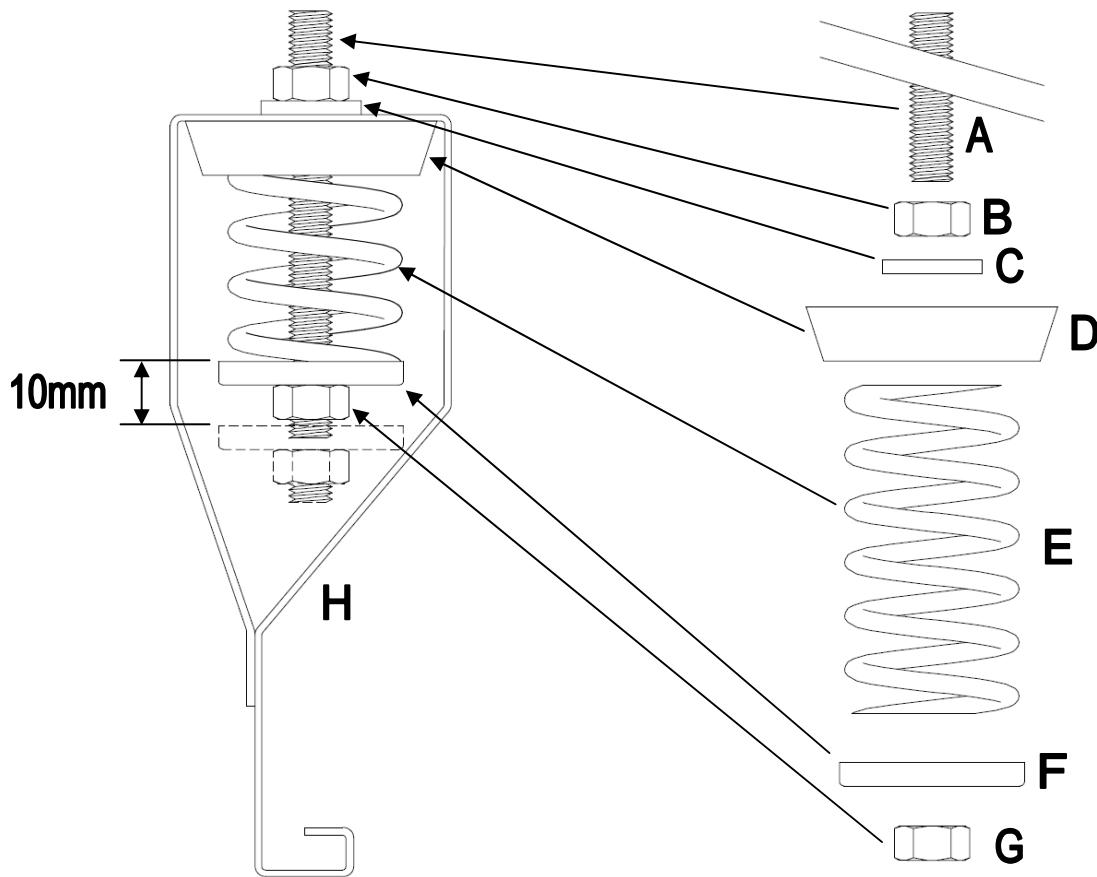


Installation Instructions for HDQF-X series



- Cut drop rods (A) to the length required in order to achieve the desired ceiling height.
- Assemble the following components as per the diagram above:
 - B** - Nut
 - C** - Penny washer (minimum outside diameter of 30mm)
 - D** - Rubber cup
 - E** - Spring element
 - F** - Metal cup
 - G** - Self-locking nut
 - H** - Hanger bracket
- Before the hanger is installed the spring element requires 10mm of compression, as indicated in the diagram. This is done by tightening nut **B**.
- Bolt the top of the drop rod to the soffit, bracket or ceiling joist as required.
- Set all the hangers to the same height by laser or similar method.
- Ensure all the hangers have the correct orientation.
- Rotate primary channels into the hanger bracket and fix with sheet metal screws as necessary through the hole provided.
- Clip the secondary (top hat) sections to the primary channels.
- Install the plasterboard in the normal way.

Mason U.K. Ltd.
Unit 6 Abbey Business Park
Monks Walk
Farnham, Surrey
GU9 8HT

Phone: 01252 716610
Fax: 01252 716630
E-mail: info@mason-uk.co.uk
Web: www.mason-uk.co.uk